

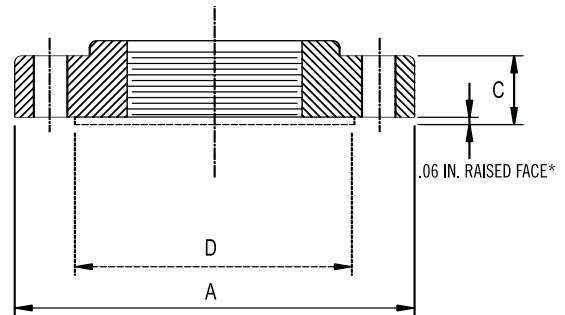
4"–48"

CLASS 250 FLANGES



U.S. PIPE AND FOUNDRY COMPANY / 866.DIP.PIPE / WWW.USPIPE.COM

Ductile Iron Flanged Pipe With Class 250# Threaded Flanges



Flange Details

Nominal Pipe Size Inches	FLANGES			BOLT HOLES		BOLTING			
	Diameter of Flange A	Thickness of Flange, Min. C	Diameter of Raised Face D	Diameter of Bolt Circle	Diameter of Bolt Holes	Qty. of Bolts	Diameter of Bolts	Length of Bolts	Length of Stud Bolts
4	10	1.25	6.94	7.88	0.88	8	0.75	4	-
6	12.5	1.44	9.69	10.62	0.88	12	0.75	4	-
8	15	1.62	11.94	13	1	12	0.88	4.5	-
10	17.5	1.88	14.06	15.25	1.12	16	1	5.5	-
12	20.5	2	16.44	17.75	1.25	16	1.12	5.5	-
14	23	2.12	18.94	20.25	1.25	20	1.12	6	-
16	25.5	2.25	21.06	22.5	1.38	20	1.25	6.5	-
18	28	2.38	23.31	24.75	1.38	24	1.25	6.5	-
20	30.5	2.5	25.56	27	1.38	24	1.25	7	-
24	36	2.75	30.31	32	1.62	24	1.5	7.5	9.5
30	43	3	37.19	39.25	2	28	1.75	8.5	10.5
36	50	3.38	43.69	46	2.25	32	2	9.5	12
42	57	3.69	50.44	52.75	2.25	36	2	10	12.5
48	65	4	58.44	60.75	2.25	40	2	11	13

***FACING:** Raised Face Flanges are available upon request.

BACK FACING: Flanges may be back or spot faced for compliance with flange thickness tolerances.

LAYING LENGTH DIMENSIONS: Pipe face-to-face dimensions conform to a tolerance of $\pm .12"$ for sizes 4"-48". Fittings face-to-face dimensions conform to a tolerance of $\pm .06"$ for sizes 4"-10" and $\pm .12"$ for sizes 12"-48". The largest opening governs the tolerance for all openings. Center-to-face tolerances are one half the face-to-face tolerances.

FLANGES: The bolt circle and bolt holes of the above flanges match those of Class 250 flanges shown in ASME B16.1 – **Cast Iron Pipe Flanges and Flanged Fittings**. Class 250 flanges do not match and can not be joined with Class 125 flanges shown in ASME B16.1. 250# Flanges are compatible with Class 300 flanges.

CERTIFICATION: NAPF 3rd Party QUALITY PLUS™ Certified. Fabricated in accordance with the applicable requirements of ANSI/AWWA C115/A21.15 - **Flanged Ductile Iron Pipe**.

MORE THAN JUST PIPE.

